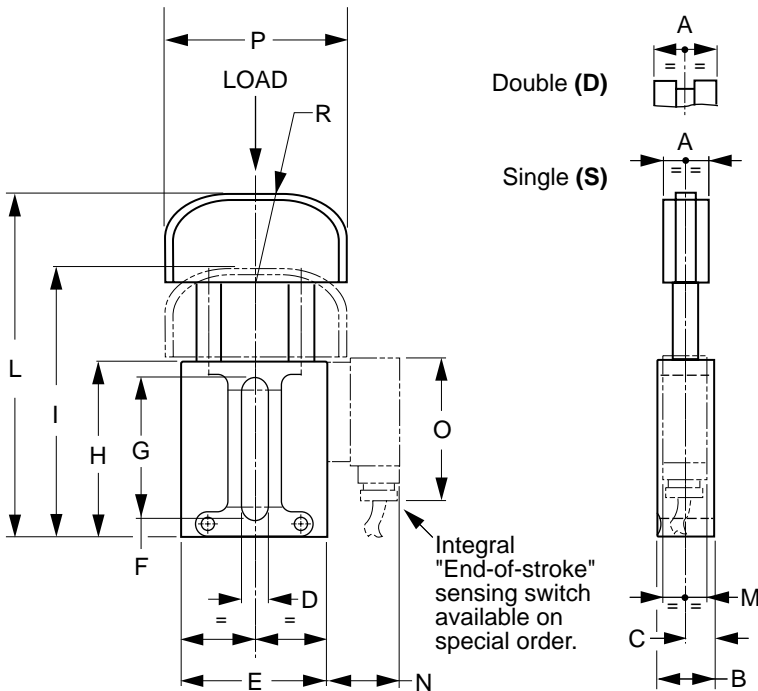


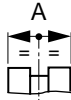


TO Type Tensioner

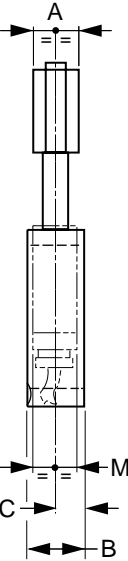
For 3/8" to 1-1/2" Pitch Roller Chains
Spring-Loaded



Double (D)

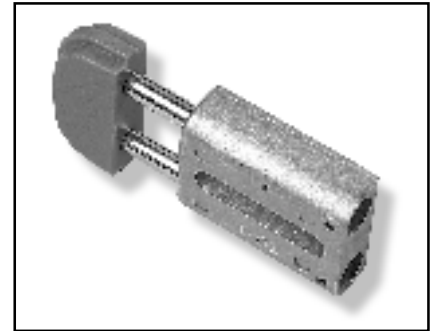


Single (S)



Integral "End-of-stroke" sensing switch available on special order.

Automatically keeps the tension constant.



MATERIAL: Head – Polyethylene (UHMW-PE)
Base – High-Tensile Die-Cast Aluminum Alloy
Slide Arms – High-Tensile Steel (Zinc Plated)
MAX. OPERATING TEMPERATURE: 65°C (149°F)

Catalog Number	Chain Pitch	Load (N)		A	B	C	D	E	F	G	H	I	L	M	N	O	P	R
		Min	Max															
QCT-TO103S QCT-TO103D*	3/8" x 7/32"	130	250	20	23	12.5	11	56.2	7	58	74	110	138	-	-	-	70	100
QCT-TO104S QCT-TO104D*	1/2" x 5/16"	130	250	20	23	12.5	11	56.2	7	58	74	110	138	-	-	-	70	100
QCT-TO105S QCT-TO105D*	5/8" x 3/8"	130	250	20 25	23	12.5	11	56.2	7	58	74	110	138	-	-	-	70	100
QCT-TO205S QCT-TO205D*	5/8" x 3/8"	180	420	22 25	28	15	12.5	70.5	9	70	87	133	169	-	-	-	90	120
QCT-TO206S QCT-TO206D	3/4" x 7/16"	180	420	22 30	28	15	12.5	70.5	9	70	87	133	169	-	-	-	90	120
QCT-TO308S	1" x 17 mm	300	650	25	33	17.5	14.5	82	9	86	104	160	202	21	35	70	110	140
QCT-TO310S	1-1/4" x 3/4"	300	650	25	33	17.5	14.5	82	9	86	104	160	202	21	35	70	110	140
QCT-TO312S	1-1/2" x 1"	300	650	25	33	17.5	14.5	82	9	86	104	160	202	21	35	70	110	140

*Head for triple chain is not available (see TOT Type).

#Heads for double and triple chains are not available (see TOT Type).

All dimensions are in mm unless otherwise noted.

QTC, Econobelt & Zetasassi products are available from: MARYLAND METRICS
P.O.Box 261 Owings Mills, MD 21117 USA E-mail: sales@mdmetric.com
phones: (410)358-3130 (800)638-1830 faxes: (410)358-3142 (800)872-9329 url: http://mdmetric.com
 copyright 2003 maryland metrics/qtc/econobelt/zetasassi