



Setting Standards

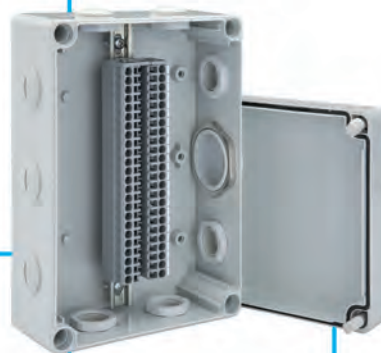
OEM Enclosures – PC or ABS

Series 12 with plain Sides and metric or PG Knockouts

Manufactured from high performance Thermoplastic, Polycarbonate or ABS. These Enclosures are suitable for demanding OEM applications, e.g. for the protection of electronic and pneumatic components.

This series includes small and medium sized universal Enclosures made of Polycarbonate with metric or PG knockouts. The Enclosures are available in increments of 25 mm (1"), e.g. 75 x 125 x 75 to 175 x 250 x 150 mm.

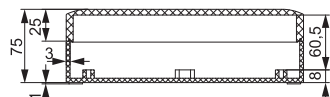
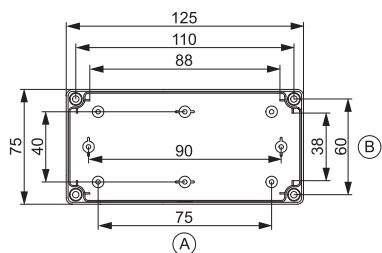
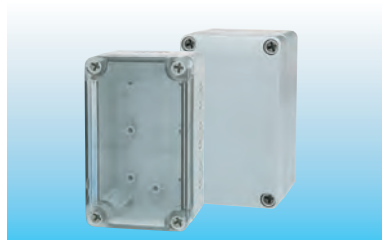
Conformity	
Polycarbonate Enclosure:	
ABS-Enclosure:	
Technical Information	
Protection according to EN 60529	IP 66 / 67
Impact rating according to EN 62262	PC: IK 08 (+35°C...-25°C) ABS: IK 07 (+35°C) IK 06 (-25°C)
Temperature range	PC: -50°C...+100 °C ABS: -40°C...+60 °C
Flammability	PC: UL746C 5V ABS: UL94 HB
Material	
Bottom	ABS or Fiber reinforced Polycarbonate
Cover	ABS or Polycarbonate
Transparent Cover	Polycarbonate
Cover Screws	Fiber reinforced Polyamid
Gasket	PUR (Polyurethane)
Standard color	
Bottom	Grey, RAL 7035
Cover	Grey, RAL 7035 or transparent





Mid size Enclosures made of Polycarbonate or ABS

75 x 125 x 75 mm



Polycarbonate	Part Number
Grey cover, plain sides	3.120.0550.31
Grey cover, metric knockouts, A: 3 x \varnothing 12 mm / 20 mm B: 1 x \varnothing 16 mm / 25 mm	3.120.0663.58
Grey cover, PG knockouts, A: 3 x PG 9 / PG 13,5 B: 1 x PG 9 / PG 13,5	3.120.0550.00
Transp. cover*, plain sides	3.120.0550.24
Transp. cover*, metric knockouts, A: 3 x \varnothing 12 mm / 20 mm B: 1 x \varnothing 16 mm / 25 mm	3.120.0665.25
Transp. cover*, PG knockouts, A: 3 x PG 9 / PG 13,5 B: 1 x PG 9 / PG 13,5	3.120.0550.17

ABS	Part Number
Grey cover, plain sides	3.120.0550.48
Transp. cover*, plain sides	3.120.0550.55

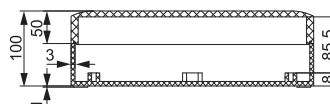
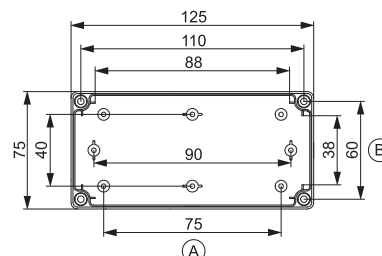
Assembly and machining services of your enclosures are available upon request.
Drawings with additional dimensions can be furnished upon request.
Cover screws and assembly screws are included.
*Transparent cover always out of Polycarbonate

Accessories	Part Number
Mounting plate, 1,5 mm thick, galvanized steel	3.120.0560.38
DIN Rail, DIN 35, short side	3.120.0560.90
DIN Rail, DIN 35, long side	3.120.0561.06



Additional accessories on page 37.

75 x 125 x 100 mm



Polycarbonate	Part Number
Grey cover, plain sides	3.120.0550.86
Grey cover, metric knockouts, A: 3 x \varnothing 12 mm / 20 mm B: 1 x \varnothing 16 mm / 25 mm	3.120.0663.65
Grey cover, PG knockouts, A: 3 x PG 9 / PG 13,5 B: 1 x PG 9 / PG 13,5	3.120.0550.62
Transp. cover*, plain sides	3.120.0550.93
Transp. cover*, metric knockouts, A: 3 x \varnothing 12 mm / 20 mm B: 1 x \varnothing 16 mm / 25 mm	3.120.0665.32
Transp. cover*, PG knockouts, A: 3 x PG 9 / PG 13,5 B: 1 x PG 9 / PG 13,5	3.120.0550.79

ABS	Part Number
Grey cover, plain sides	3.120.0551.09
Transp. cover*, plain sides	3.120.0551.16

Assembly and machining services of your enclosures are available upon request.
Drawings with additional dimensions can be furnished upon request.
Cover screws and assembly screws are included.
*Transparent cover always out of Polycarbonate

Accessories	Part Number
Mounting plate, 1,5 mm thick, galvanized steel	3.120.0560.38
DIN Rail, DIN 35, short side	3.120.0560.90
DIN Rail, DIN 35, long side	3.120.0561.06

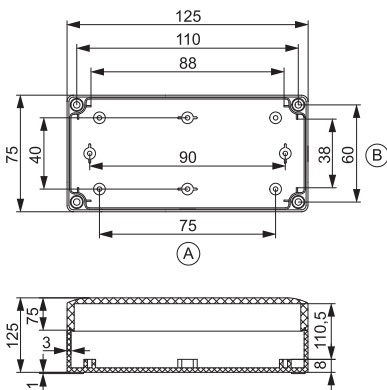
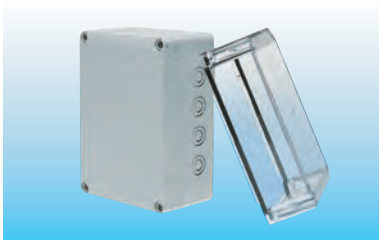


Additional accessories on page 37.



Mid size Enclosures made of Polycarbonate or ABS

75 x 125 x 125 mm



Polycarbonate	Part Number
Grey cover, plain sides	3.120.0551.47
Grey cover, metric knockouts, A: 3 x \varnothing 12 mm / 20 mm B: 1 x \varnothing 16 mm / 25 mm	3.120.0663.72
Grey cover, PG knockouts, A: 3 x PG 9 / PG 13,5 B: 1 x PG 9 / PG 13,5	3.120.0551.23
Transp. cover*, plain sides	3.120.0551.54
Transp. cover*, metric knockouts, A: 3 x \varnothing 12 mm / 20 mm B: 1 x \varnothing 16 mm / 25 mm	3.120.0665.49
Transp. cover*, PG knockouts, A: 3 x PG 9 / PG 13,5 B: 1 x PG 9 / PG 13,5	3.120.0551.30

Accessories	Part Number
Mounting plate, 1,5 mm thick, galvanized steel	3.120.0560.38
DIN Rail, DIN 35, short side	3.120.0560.90
DIN Rail, DIN 35, long side	3.120.0561.06

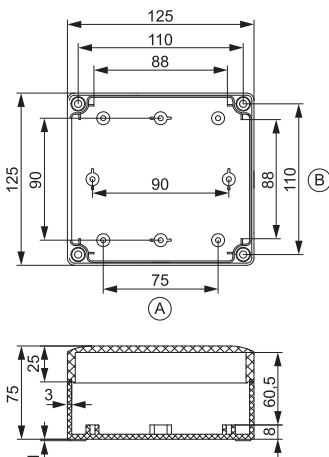
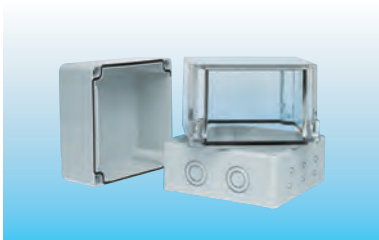


ABS	Part Number
Grey cover, plain sides	3.120.0551.61
Transp. cover*, plain sides	3.120.0551.78

Assembly and machining services of your enclosures are available upon request.
Drawings with additional dimensions can be furnished upon request.
Cover screws and assembly screws are included.
*Transparent cover always out of Polycarbonate

Additional accessories on page 37.

125 x 125 x 75 mm



Polycarbonate	Part Number
Grey cover, plain sides	3.120.0552.08
Grey cover, metric knockouts, A: 3 x \varnothing 12 mm / 20 mm B: 2 x \varnothing 16 mm / 25 mm	3.120.0663.89
Grey cover, PG knockouts, A: 3 x PG 9 / PG 13,5 B: 2 x PG 16 / PG 21	3.120.0551.85
Transp. cover*, plain sides	3.120.0552.15
Transp. cover*, metric knockouts, A: 3 x \varnothing 12 mm / 20 mm B: 2 x \varnothing 16 mm / 25 mm	3.120.0665.56
Transp. cover*, PG knockouts, A: 3 x PG 9 / PG 13,5 B: 2 x PG 16 / PG 21	3.120.0551.92

Accessories	Part Number
Mounting plate, 1,5 mm thick, galvanized steel	3.120.0560.45
DIN Rail, DIN 35	3.120.0561.06



ABS	Part Number
Grey cover, plain sides	3.120.0552.22
Transp. cover*, plain sides	3.120.0552.39

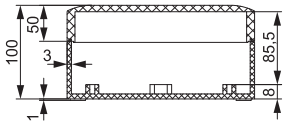
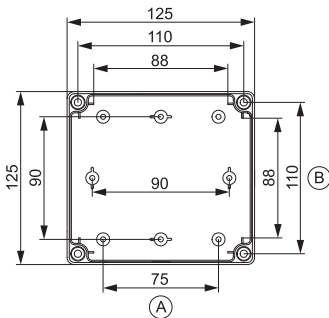
Assembly and machining services of your enclosures are available upon request.
Drawings with additional dimensions can be furnished upon request.
Cover screws and assembly screws are included.
*Transparent cover always out of Polycarbonate

Additional accessories on page 37.



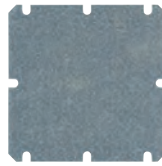
Mid size Enclosures made of Polycarbonate or ABS

125 x 125 x 100 mm



Polycarbonate	Part Number
Grey cover, plain sides	3.120.0552.60
Grey cover, metric knockouts, A: 3 x \varnothing 12 mm / 20 mm B: 2 x \varnothing 16 mm / 25 mm	3.120.0663.96
Grey cover, PG knockouts, A: 3 x PG 9 / PG 13,5 B: 2 x PG 16 / PG 21	3.120.0552.46
Transp. cover*, plain sides	3.120.0552.77
Transp. cover*, metric knockouts, A: 3 x \varnothing 12 mm / 20 mm B: 2 x \varnothing 16 mm / 25 mm	3.120.0665.63
Transp. cover*, PG knockouts, A: 3 x PG 9 / PG 13,5 B: 2 x PG 16 / PG 21	3.120.0552.53

Accessories	Part Number
Mounting plate, 1,5 mm thick, galvanized steel	3.120.0560.45
DIN Rail, DIN 35	3.120.0561.06

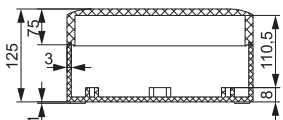
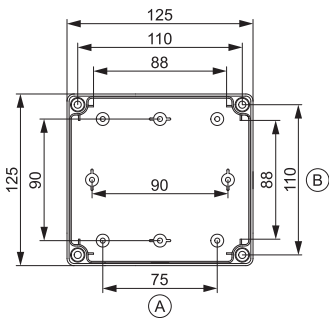


ABS	Part Number
Grey cover, plain sides	3.120.0552.84
Transp. cover*, plain sides	3.120.0552.91

Assembly and machining services of your enclosures are available upon request.
Drawings with additional dimensions can be furnished upon request.
Cover screws and assembly screws are included.
*Transparent cover always out of Polycarbonate

Additional accessories on page 37.

125 x 125 x 125 mm



Polycarbonate	Part Number
Grey cover, plain sides	3.120.0553.21
Grey cover, metric knockouts, A: 3 x \varnothing 12 mm / 20 mm B: 2 x \varnothing 16 mm / 25 mm	3.120.0664.02
Grey cover, PG knockouts, A: 3 x PG 9 / PG 13,5 B: 2 x PG 16 / PG 21	3.120.0553.07
Transp. cover*, plain sides	3.120.0553.38
Transp. cover*, metric knockouts, A: 3 x \varnothing 12 mm / 20 mm B: 2 x \varnothing 16 mm / 25 mm	3.120.0665.70
Transp. cover*, PG knockouts, A: 3 x PG 9 / PG 13,5 B: 2 x PG 16 / PG 21	3.120.0553.14

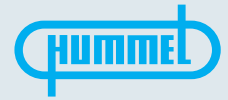
Accessories	Part Number
Mounting plate, 1,5 mm thick, galvanized steel	3.120.0560.45
DIN Rail, DIN 35	3.120.0561.06



ABS	Part Number
Grey cover, plain sides	3.120.0553.45
Transp. cover*, plain sides	3.120.0553.52

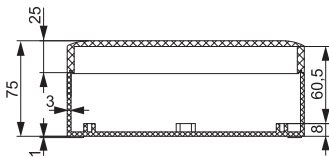
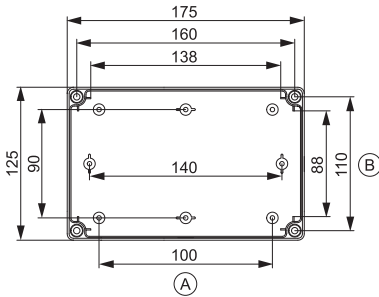
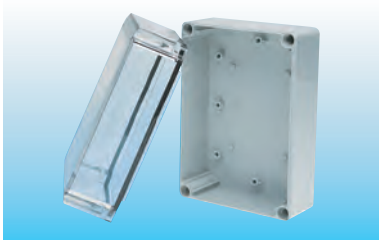
Assembly and machining services of your enclosures are available upon request.
Drawings with additional dimensions can be furnished upon request.
Cover screws and assembly screws are included.
*Transparent cover always out of Polycarbonate

Additional accessories on page 37.



Mid size Enclosures made of Polycarbonate or ABS

125 x 175 x 75 mm

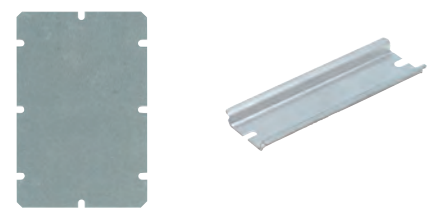


Polycarbonate	Part Number
Grey cover, plain sides	3.120.0553.83
Grey cover, metric knockouts, A: 4 x \varnothing 12 mm / 20 mm B: 2 x \varnothing 16 mm / 25 mm	3.120.0664.19
Grey cover, PG knockouts, A: 4 x PG 9 / PG 13,5 B: 2 x PG 16 / PG 21	3.120.0553.69
Transp. cover*, plain sides	3.120.0553.90
Transp. cover*, metric knockouts, A: 4 x \varnothing 12 mm / 20 mm B: 2 x \varnothing 16 mm / 25 mm	3.120.0665.87
Transp. cover*, PG knockouts, A: 4 x PG 9 / PG 13,5 B: 2 x PG 16 / PG 21	3.120.0553.76

ABS	Part Number
Grey cover, plain sides	3.120.0554.06
Transp. cover*, plain sides	3.120.0554.13

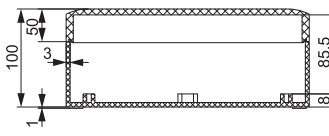
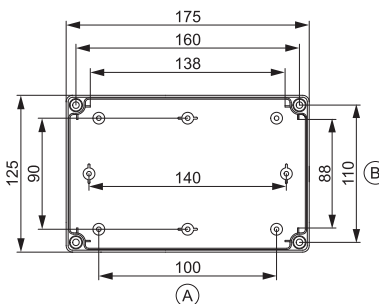
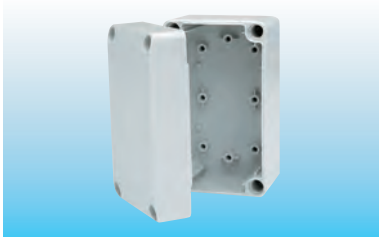
Assembly and machining services of your enclosures are available upon request.
Drawings with additional dimensions can be furnished upon request.
Cover screws and assembly screws are included.
*Transparent cover always out of Polycarbonate

Accessories	Part Number
Mounting plate, 1,5 mm thick, galvanized steel	3.120.0560.52
DIN Rail, DIN 35, short side	3.120.0561.06
DIN Rail, DIN 35, long side	3.120.0561.13



Additional accessories on page 37.

125 x 175 x 100 mm

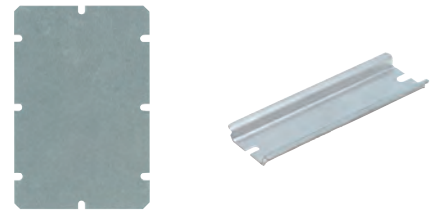


Polycarbonate	Part Number
Grey cover, plain sides	3.120.0554.44
Grey cover, metric knockouts, A: 4 x \varnothing 12 mm / 20 mm B: 2 x \varnothing 16 mm / 25 mm	3.120.0664.26
Grey cover, PG knockouts, A: 4 x PG 9 / PG 13,5 B: 2 x PG 16 / PG 21	3.120.0554.20
Transp. cover*, plain sides	3.120.0554.51
Transp. cover*, metric knockouts, A: 4 x \varnothing 12 mm / 20 mm B: 2 x \varnothing 16 mm / 25 mm	3.120.0665.94
Transp. cover*, PG knockouts, A: 4 x PG 9 / PG 13,5 B: 2 x PG 16 / PG 21	3.120.0554.37

ABS	Part Number
Grey cover, plain sides	3.120.0554.68
Transp. cover*, plain sides	3.120.0554.75

Assembly and machining services of your enclosures are available upon request.
Drawings with additional dimensions can be furnished upon request.
Cover screws and assembly screws are included.
*Transparent cover always out of Polycarbonate

Accessories	Part Number
Mounting plate, 1,5 mm thick, galvanized steel	3.120.0560.52
DIN Rail, DIN 35, short side	3.120.0561.06
DIN Rail, DIN 35, long side	3.120.0561.13

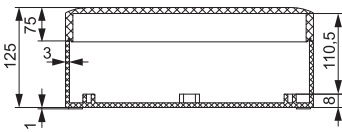
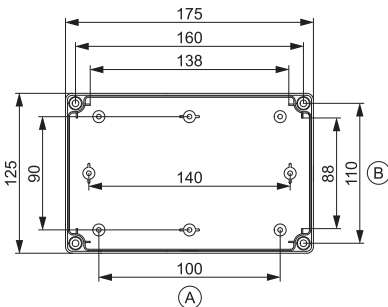
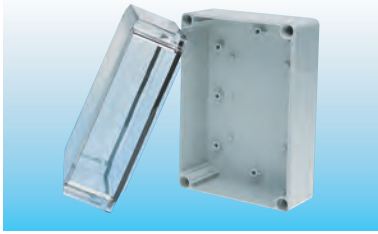


Additional accessories on page 37.



Mid size Enclosures made of Polycarbonate or ABS

125 x 175 x 125 mm



Polycarbonate	Part Number
Grey cover, plain sides	3.120.0555.05
Grey cover, metric knockouts, A: 4 x ø 12 mm / 20 mm B: 2 x ø 16 mm / 25 mm	3.120.0664.33
Grey cover, PG knockouts, A: 4 x PG 9 / PG 13,5 B: 2 x PG 16 / PG 21	3.120.0554.82
Transp. cover*, plain sides	3.120.0555.12
Transp. cover*, metric knockouts, A: 4 x ø 12 mm / 20 mm B: 2 x ø 16 mm / 25 mm	3.120.0666.00
Transp. cover*, PG knockouts, A: 4 x PG 9 / PG 13,5 B: 2 x PG 16 / PG 21	3.120.0554.99

ABS	Part Number
Grey cover, plain sides	3.120.0555.29
Transp. cover*, plain sides	3.120.0555.36

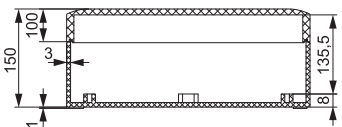
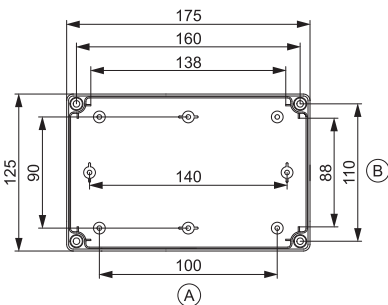
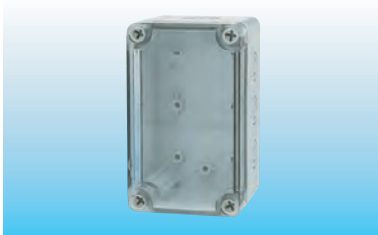
Assembly and machining services of your enclosures are available upon request.
Drawings with additional dimensions can be furnished upon request.
Cover screws and assembly screws are included.
*Transparent cover always out of Polycarbonate

Accessories	Part Number
Mounting plate, 1,5 mm thick, galvanized steel	3.120.0560.52
DIN Rail, DIN 35, short side	3.120.0561.06
DIN Rail, DIN 35, long side	3.120.0561.13



Additional accessories on page 37.

125 x 175 x 150 mm



Polycarbonate	Part Number
Grey cover, plain sides	3.120.0555.67
Grey cover, metric knockouts, A: 4 x ø 12 mm / 20 mm B: 2 x ø 16 mm / 25 mm	3.120.0664.40
Grey cover, PG knockouts, A: 4 x PG 9 / PG 13,5 B: 2 x PG 16 / PG 21	3.120.0555.43
Transp. cover*, plain sides	3.120.0555.74
Transp. cover*, metric knockouts, A: 4 x ø 12 mm / 20 mm B: 2 x ø 16 mm / 25 mm	3.120.0666.17
Transp. cover*, PG knockouts, A: 4 x PG 9 / PG 13,5 B: 2 x PG 16 / PG 21	3.120.0555.50

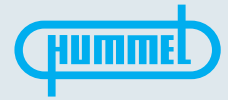
ABS	Part Number
Grey cover, plain sides	3.120.0555.81
Transp. cover*, plain sides	3.120.0555.98

Assembly and machining services of your enclosures are available upon request.
Drawings with additional dimensions can be furnished upon request.
Cover screws and assembly screws are included.
*Transparent cover always out of Polycarbonate

Accessories	Part Number
Mounting plate, 1,5 mm thick, galvanized steel	3.120.0560.52
DIN Rail, DIN 35, short side	3.120.0561.06
DIN Rail, DIN 35, long side	3.120.0561.13

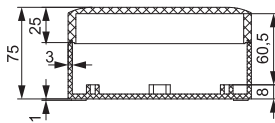
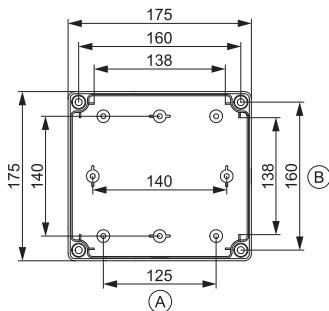


Additional accessories on page 37.



Mid size Enclosures made of Polycarbonate or ABS

175 x 175 x 75 mm

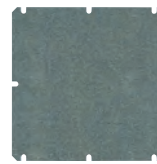


Polycarbonate	Part Number
Grey cover, plain sides	3.120.0556.28
Grey cover, metric knockouts, A: 5 x \varnothing 12 mm / 20 mm B: 2 x \varnothing 12 mm / 20 mm + 2 x \varnothing 16 mm / 25 mm	3.120.0664.57
Grey cover, PG knockouts, A: 5 x PG 9 / PG 13,5 B: 2 x PG 16 / PG 21 + 2 x PG 9 / PG 16	3.120.0556.04
Transp. cover*, plain sides	3.120.0556.35
Transp. cover*, metric knockouts, A: 5 x \varnothing 12 mm / 20 mm B: 2 x \varnothing 12 mm / 20 mm + 2 x \varnothing 16 mm / 25 mm	3.120.0666.24
Transp. cover*, PG knockouts, A: 5 x PG 9 / PG 13,5 B: 2 x PG 16 / PG 21 + 2 x PG 9 / PG 16	3.120.0556.11

ABS	Part Number
Grey cover, plain sides	3.120.0556.42
Transp. cover*, plain sides	3.120.0556.59

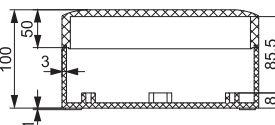
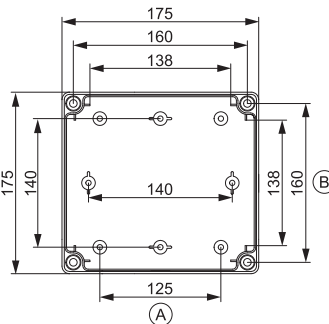
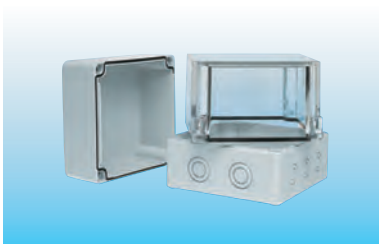
Assembly and machining services of your enclosures are available upon request.
Drawings with additional dimensions can be furnished upon request.
Cover screws and assembly screws are included.
*Transparent cover always out of Polycarbonate

Accessories	Part Number
Mounting plate, 1,5 mm thick, galvanized steel	3.120.0560.69
DIN Rail, DIN 35	3.120.0561.13



Additional accessories on page 37.

175 x 175 x 100 mm



Polycarbonate	Part Number
Grey cover, plain sides	3.120.0556.80
Grey cover, metric knockouts, A: 5 x \varnothing 12 mm / 20 mm B: 2 x \varnothing 12 mm / 20 mm + 2 x \varnothing 16 mm / 25 mm	3.120.0664.64
Grey cover, PG knockouts, A: 5 x PG 9 / PG 13,5 B: 2 x PG 16 / PG 21 + 2 x PG 9 / PG 16	3.120.0556.66
Transp. cover*, plain sides	3.120.0556.97
Transp. cover*, metric knockouts, A: 5 x \varnothing 12 mm / 20 mm B: 2 x \varnothing 12 mm / 20 mm + 2 x \varnothing 16 mm / 25 mm	3.120.0666.31
Transp. cover*, PG knockouts, A: 5 x PG 9 / PG 13,5 B: 2 x PG 16 / PG 21 + 2 x PG 9 / PG 16	3.120.0556.73

ABS	Part Number
Grey cover, plain sides	3.120.0557.03
Transp. cover*, plain sides	3.120.0557.10

Assembly and machining services of your enclosures are available upon request.
Drawings with additional dimensions can be furnished upon request.
Cover screws and assembly screws are included.
*Transparent cover always out of Polycarbonate

Accessories	Part Number
Mounting plate, 1,5 mm thick, galvanized steel	3.120.0560.69
DIN Rail, DIN 35	3.120.0561.13

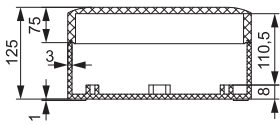
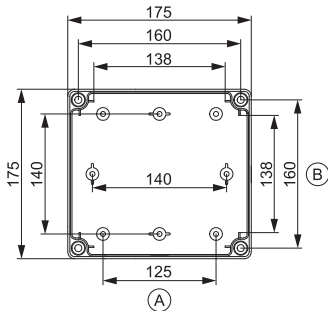


Additional accessories on page 37.



Mid size Enclosures made of Polycarbonate or ABS

175 x 175 x 125 mm

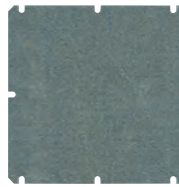


Polycarbonate	Part Number
Grey cover, plain sides	3.120.0557.41
Grey cover, metric knockouts, A: 5 x \varnothing 12 mm / 20 mm B: 2 x \varnothing 12 mm / 20 mm + 2 x \varnothing 16 mm / 25 mm	3.120.0664.71
Grey cover, PG knockouts, A: 5 x PG 9 / PG 13,5 B: 2 x PG 16 / PG 21 + 2 x PG 9 / PG 16	3.120.0557.27
Transp. cover*, plain sides	3.120.0557.58
Transp. cover*, metric knockouts, A: 5 x \varnothing 12 mm / 20 mm B: 2 x \varnothing 12 mm / 20 mm + 2 x \varnothing 16 mm / 25 mm	3.120.0666.48
Transp. cover*, PG knockouts, A: 5 x PG 9 / PG 13,5 B: 2 x PG 16 / PG 21 + 2 x PG 9 / PG 16	3.120.0557.34

ABS	Part Number
Grey cover, plain sides	3.120.0557.65
Transp. cover*, plain sides	3.120.0557.72

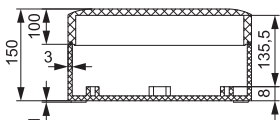
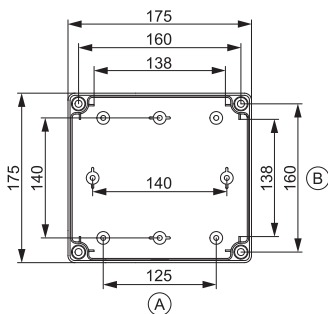
Assembly and machining services of your enclosures are available upon request.
Drawings with additional dimensions can be furnished upon request.
Cover screws and assembly screws are included.
*Transparent cover always out of Polycarbonate

Accessories	Part Number
Mounting plate, 1,5 mm thick, galvanized steel	3.120.0560.69
DIN Rail, DIN 35	3.120.0561.13



Additional accessories on page 37.

175 x 175 x 150 mm



Polycarbonate	Part Number
Grey cover, plain sides	3.120.0558.02
Grey cover, metric knockouts, A: 5 x \varnothing 12 mm / 20 mm B: 2 x \varnothing 12 mm / 20 mm + 2 x \varnothing 16 mm / 25 mm	3.120.0664.88
Grey cover, PG knockouts, A: 5 x PG 9 / PG 13,5 B: 2 x PG 16 / PG 21 + 2 x PG 9 / PG 16	3.120.0557.89
Transp. cover*, plain sides	3.120.0558.19
Transp. cover*, metric knockouts, A: 5 x \varnothing 12 mm / 20 mm B: 2 x \varnothing 12 mm / 20 mm + 2 x \varnothing 16 mm / 25 mm	3.120.0666.55
Transp. cover*, PG knockouts, A: 5 x PG 9 / PG 13,5 B: 2 x PG 16 / PG 21 + 2 x PG 9 / PG 16	3.120.0557.96

ABS	Part Number
Grey cover, plain sides	3.120.0558.26
Transp. cover*, plain sides	3.120.0558.33

Assembly and machining services of your enclosures are available upon request.
Drawings with additional dimensions can be furnished upon request.
Cover screws and assembly screws are included.
*Transparent cover always out of Polycarbonate

Accessories	Part Number
Mounting plate, 1,5 mm thick, galvanized steel	3.120.0560.69
DIN Rail, DIN 35, short side	3.120.0561.13

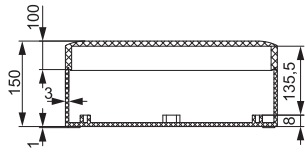
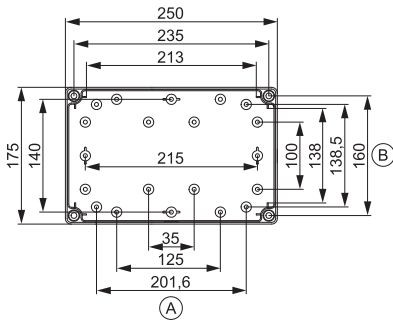
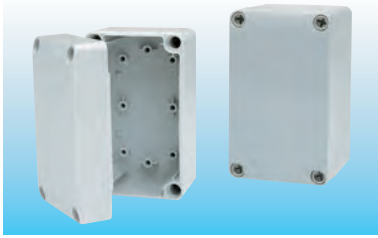


Additional accessories on page 37.



Mid size Enclosures made of Polycarbonate or ABS

175 x 250 x 150 mm



Polycarbonate	Part Number
---------------	-------------

Grey cover, plain sides	3.120.0559.87
-------------------------	---------------

Grey cover, metric knockouts, A: 6 x \varnothing 12 mm / 20 mm B: 2 x \varnothing 12 mm / 20 mm + 2 x \varnothing 16 mm / 25 mm	3.120.0665.18
---	---------------

Grey cover, PG knockouts, A: 6 x PG 9 / PG 13,5 B: 2 x PG 16 / PG 21 + 2 x PG 9 / PG 16	3.120.0559.63
---	---------------

Transp. cover*, plain sides	3.120.0559.94
-----------------------------	---------------

Transp. cover*, metric knockouts, A: 6 x \varnothing 12 mm / 20 mm B: 2 x \varnothing 12 mm / 20 mm + 2 x \varnothing 16 mm / 25 mm	3.120.0666.86
---	---------------

Transp. cover*, PG knockouts, A: 6 x PG 9 / PG 13,5 B: 2 x PG 16 / PG 21 + 2 x PG 9 / PG 16	3.120.0559.70
---	---------------

ABS	Part Number
-----	-------------

Grey cover, plain sides	3.120.0560.07
-------------------------	---------------

Transp. cover*, plain sides	3.120.0560.14
-----------------------------	---------------

Assembly and machining services of your enclosures are available upon request.
Drawings with additional dimensions can be furnished upon request.

Cover screws and assembly screws are included.
*Transparent cover always out of Polycarbonate

Accessories	Part Number
-------------	-------------

Mounting plate, 1,5 mm thick, galvanized steel	3.120.0560.76
---	---------------

DIN Rail, DIN 35, short side	3.120.0561.13
------------------------------	---------------

DIN Rail, DIN 35, long side	3.120.0561.20
-----------------------------	---------------



Additional accessories on page 37.



Accessories for Series 10 and 12.

Series 10 and 12 – Accessories

Accessories

Hinges	Size mm	Part Number
Pair, polycarbonate	28 x 28 x 10	3.812.0561.44

Accessories

Outside Latches	Size mm	Part Number
Set, polycarbonate	15 x 30	3.812.0561.51

Accessories

Cover Plugs	Size mm	Part Number
Short, for 25 mm cover, polyethylene	Ø 11 x 12	3.812.0568.47
Long, for 50 mm cover, polyethylene	Ø 12 x 36,5	3.812.0568.54
Short, for 50 mm and 100 mm cover, polyethylene	Ø 11,5 x 12	3.812.0568.61

Accessories

Wing Head Part	Size mm	Part Number
Wing head part for cover screws	11 x 17	3.812.0548.67

Accessories

Cover- and Mounting Screws	Size mm	Part Number
Cover screws, short, steel	11 x 35	3.812.0561.82
Cover screws, long for 50 mm cover	11 x 60	3.812.0561.99
Set 1, 4 cover screws short and 4 mounting screws	11 x 35	3.812.0549.80
Set 2, 4 cover screws long for 50 mm cover and 4 mounting screws	11 x 60	3.812.0549.97
Mounting screws for plates and rails, steel	4 x 8	3.812.0561.75

Accessories

Threaded Brass Insert for Mounting Plates and PCB Boards	Size mm	Part Number
Brass insert	M2	3.812.0561.68
Brass insert, set incl. 4 pcs.	M2	3.812.0568.30



Series 10 and 12 – Accessories

Accessories

Pressure balance element	Size mm	Part Number
Pressure balance element, grey, Polyamid	M 12 x 1,5	3.213.1200.50
Locking Nut, grey, Polyamid	M 12 x 1,5	3.262.1200.50

