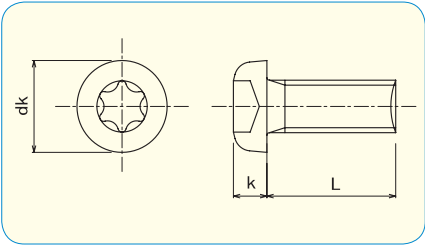


NOTE: Zinc 3Cr. Plated and Black 3Cr. Plated are RoHS compliant trivalent finishes

PAN HEAD TRX MACHINE SCREW



- **Material · plating**
 Steel / Zinc 3Cr. Plated
 Steel / Zinc Black 3Cr. Plated



How to order or inquire: R830-TXPH-finish code diameter x length

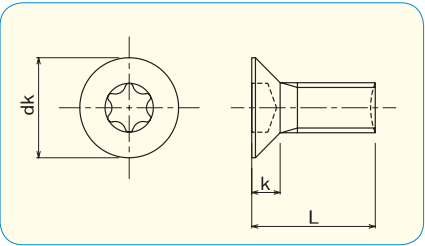
Example: R830-TXPH-CR3 3x10

Finish codes: CR3 for Zinc 3Cr. Plated, CR3B for Black 3Cr. Plated

	M3	M4	M5	M6
dk	5.5	7	9	10.5
k	2	2.6	3.3	3.9

L \ d	M3	M4	M5	M6
6	2500			
8	2000	2000		
10	2000	1500	900	600
12		1500	800	500
16			700	400

FLAT HEAD TRX MACHINE SCREW



- **Material · plating**
 Steel / Zinc 3Cr. Plated
 Steel / Zinc Black 3Cr. Plated



How to order or inquire: R830-TXFH-finish code diameter x length

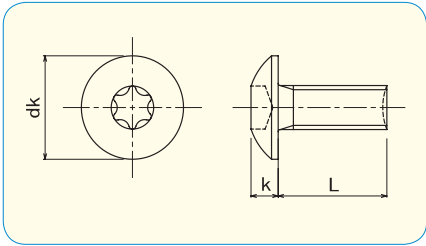
Example: R830-TXFH-CR3 3x10

Finish codes: CR3 for Zinc 3Cr. Plated, CR3B for Black 3Cr. Plated

	M3	M4	M5	M6
dk	6	8	10	12
k	1.75	2.3	2.8	3.4

L \ d	M3	M4	M5	M6
6	3000			
8	3000	2000		
10	2000	1500	1000	
12		1500	1000	500
15				500
16			700	
20				400
25				500
30				400

TRUSS HEAD TRX MACHINE SCREW



- **Material · plating**
 Steel / Zinc 3Cr. Plated
 Steel / Zinc Black 3Cr. Plated



How to order or inquire: R830-TXTRH-finish code diameter x length

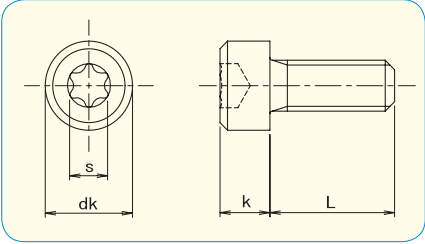
Example: R830-TXTRH-CR3 3x10

Finish codes: CR3 for Zinc 3Cr. Plated, CR3B for Black 3Cr. Plated

	M3	M4	M5	M6	M8
dk	6.9	9.4	11.8	14	17.8
k	1.9	2.5	3.1	3.7	4.8

		pcs / Box				
L \ d	M3	M4	M5	M6	M8	
6	2000					
8	1500	1500				
10	1500	1000	800			
12		1000	700	400		
15		1000				
16		900	500	300	150	
20		700			150	
25		500			150	
30		500				

TRX SOCKET CAP SCREW



• **Material**
Stainless Steel A2



How to order or inquire: R830-TXSHC-material code diameter x length

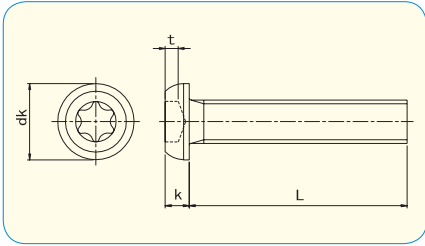
Example: R830-TXSHC-A2 3x10

Material codes: A2 for Stainless Steel A2

	M3	M4	M5	M6	M8	M10	M12
dk	5.5	7	8.5	10	13	16	18
k	3	4	5	6	8	10	12

		pcs / Box					
L \ d	M3	M4	M5	M6	M8	M10	M12
4	50						
5	50	50					
6	50	50	50				
8	50	50	50	50			
10	50	50	50	50			
12	50	50	50	50			
14	50	50	50	50			
15	50	50	50	50	50		
16	50	50	50	50	50	50	
20	50	50	50	50	50	50	
25		50	50	50		50	
30				50	50	50	30
35				50	50	50	30
40						50	30
45				50			

BUTTON HEAD TRX SOCKET SCREW



● **Material**
Stainless Steel A2

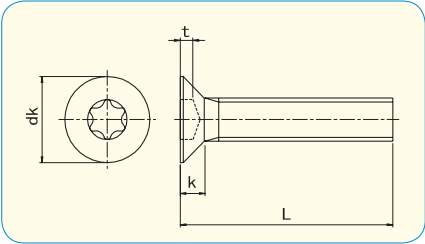


How to order or inquire: R830-TXBH-material code diameter x length
 Example: R830-TXBH-A2 3x10
 Material codes: A2 for Stainless Steel A2

	M3	M4	M5	M6	M8	M10
dk	5.7	7.6	9.5	10.5	14	17.5
k	1.65	2.2	2.75	3.3	4.4	5.5

		pcs / Box					
L \ d	M3	M4	M5	M6	M8	M10	
5	50						
6	50	50					
8	50	50	50	50			
10	50	50	50	50	50		
12	50	50	50	50	50		
15	50	50	50	50	50	50	
16	50	50	50	50	50	50	
20	50	50	50	50	50		
25		50	50	50	50	50	
30				50	50	50	
35					50		
40						50	

FLAT HEAD TRX SOCKET SCREW



● **Material**
Stainless Steel A2



How to order or inquire: R830-TXFH-material code diameter x length

Example: R830-TXFH-A2 3x10

Material codes: A2 for Stainless Steel A2

	M3	M4	M5	M6	M8
dk	6.72	8.96	11.2	13.44	17.92
k	1.86	2.48	3.1	3.72	4.96

		pcs / Box				
L \ d	M3	M4	M5	M6	M8	
6	50	50				
8	50	50	50	50		
10	50	50	50	50		
12	50	50	50	50		
15	50	50	50	50	50	
16	50	50	50	50	50	
20	50	50	50	50	50	
25		50	50	50	50	
30				50	50	
35					50	
40					50	