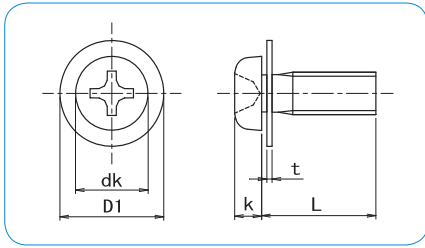


## CROSS RECESS PAN HEAD MACHINE SCREW assembled with flat washer



- **Material · plating**  
 Steel / Zinc 3Cr. Plated  
 Steel / Zinc Black 3Cr. Plated



How to order or inquire: R830-B1188F-finish code diameter x length flat washer OD (prefix W)

Example: R830-B1188F-CR3 3x10W9

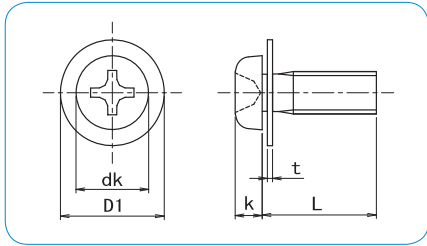
Finish codes: CR3 for Zinc 3Cr. Plated, CR3B for Black 3Cr. Plated

	M2	M2.3	M2.6	M3	M3.5	M4	M5	M6	M8	
dk	3.5	4	4.5	5.5	6	7	9	10.5	14	
k	1.3	1.5	1.7	2	2.3	2.6	3.3	3.9	5.2	
D1	6	7	7.5	8	9	10	12	13	18	
t	0.4	0.5	0.5	0.5	0.5	0.8	0.8	1.0	1.6	
Drive Size	1			2				3		

		pcs / Box								
d	L	M2	M2.3	M2.6	M3	M3.5	M4	M5	M6	M8
4	4000			2500	1800					
5	3500			2000	1800		1300			
6	3500			2000	1500		1300	700	500	
8	3000			1800	1500		1000	700	500	
10	2500			1500	1200		1000	600	500	
12	2200			1400	1600		900	600	400	150
14					1500		800	500	350	150
15	2000				1400		800	450	350	150
16					1300		800	450	350	150
18					1200		700	450	300	130
20					1000		600	400	300	130
22							600			180
25					* 900		500	500	350	180
30					* 700		450	400	300	150
35					* 500			350	250	130
40					* 500			300	200	100
45					* 600			300	200	100
50					* 500			250	200	100

\* ... Zinc 3Cr. Plated only

## CROSS RECESS PAN HEAD MACHINE SCREW assembled with flat washer



- **Material**  
Stainless Steel A2



How to order or inquire: R830-B1188F-material code diameter x length flat washer OD (prefix W)

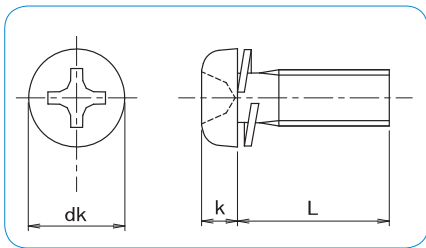
Example: R830-B1188F-A2 3x10W8

Material codes: A2 for Stainless Steel A2

	M2	M2.3	M2.6	M3	M3.5	M4	M5	M6	M8	
dk	3.5	4	4.5	5.5	6	7	9	10.5	14	
k	1.3	1.5	1.7	2	2.3	2.6	3.3	3.9	5.2	
D1	6	7	7.5	8	9	10	12	13	18	
t	0.4	0.5	0.5	0.5	0.5	0.8	0.8	1.0	1.6	
Drive Size	1			2				3		

		pcs / Box								
d	L	M2	M2.3	M2.6	M3	M3.5	M4	M5	M6	M8
4	4000									
5	3500				2000		1000			
6	3500			2000	2000		1000	500		
8	3000			1500	2000		1000	500		
10	2500			1500	1000		1000	500	200	
12	2000			1000	1000		500	500	200	
14				1000	1000		500	500		
15	2000				1000		500	500	200	
16	2000				1000		500	500	200	
18					1000		500	400		
20	1500				500		500	200	200	
25					500		500	200	200	
30					500		200	200	200	
35							200	200	100	
40							200	100	100	

## CROSS RECESS PAN HEAD MACHINE SCREW assembled with spring washer



- Material · plating
  - Steel / Zinc 3Cr. Plated
  - Steel / Zinc Black 3Cr. Plated



How to order or inquire: R830-B1188A-finish code diameter x length

Example: R830-B1188A-CR3 3x10

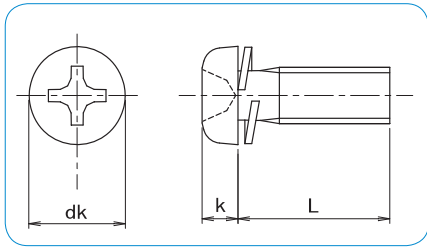
Finish codes: CR3 for Zinc 3Cr. Plated, CR3B for Black 3Cr. Plated

	M2	M2.3	M2.6	M3	M3.5	M4	M5	M6	M8	
dk	3.5	4	4.5	5.5	6	7	9	10.5	14	
k	1.3	1.5	1.7	2	2.3	2.6	3.3	3.9	5.2	
Drive Size	1			2				3		

		pcs / Box								
d	L	M2	M2.3	M2.6	M3	M3.5	M4	M5	M6	M8
4	8000	5500	4000	3000						
5	7000	5000	4000	2500	2500	2000				
6	6000	5000	3500	2500	2500	1800	1000			
8	5000	4000	3000	2000	2500	1600	800	500		
10	4000	3000	2500	1800	2000	1500	800	500		
12	3500	2500	2000	2500	1500	1200	800	450	200	
14	3000	2500	1500	2000	1200	1200	700	400	200	
15	2500		1500	1800	1200	1000	600	400	200	
16	2500	2000	1500	1800	1200	1000	600	350	200	
18	2000	1800	1200	1600	1200	900	500	350	180	
20	2000	1500	1200	1500	1000	800	500	300	180	
22				1200		700	800	450	220	
25				1200	800	600	600	450	220	
30				900	700	500	500	350	180	
35				700		450	450	300	150	
40				600		500	400	250	130	
45				800		500	350	200	120	
50				700		450	250	200	100	
55						* 400	* 250			
60						* 300	* 250			
65						* 300	* 200			
70						* 300	* 200			
75						* 300	* 200			
80						* 300	* 200			

\* ... Zinc 3Cr. Plated only

## CROSS RECESS PAN HEAD MACHINE SCREW assembled with spring washer



● Material  
Stainless Steel A2



How to order or inquire: R830-B1188A-material code diameter x length

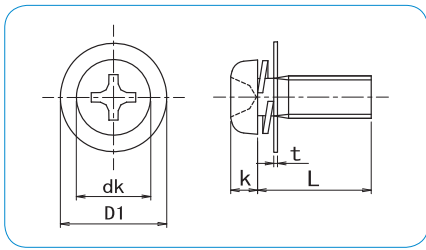
Example: R830-B1188A-A2 3x10

Material codes: A2 for Stainless Steel A2

	M2	M2.3	M2.6	M3	M3.5	M4	M5	M6	M8
dk	3.5	4	4.5	5.5	6	7	9	10.5	14
k	1.3	1.5	1.7	2	2.3	2.6	3.3	3.9	5.2
Drive Size	1			2			3		

L	d	pcs / Box								
		M2	M2.3	M2.6	M3	M3.5	M4	M5	M6	M8
4		8000	5000	4000	3000					
5		7000	5000	4000	2500		1000			
6		6000	5000	3500	2000	2000	1000	500		
8		5000	4000	3000	2000	2000	1000	500	500	
10		4000	3000	2500	2000	2000	1000	500	500	
12		3500	2500	2000	1000	1000	1000	500	500	100
14		3000	2000	1500	1000		1000	500	200	
15		2500	2000	1500	1000	1000	1000	500	200	100
16		2500	2000	1500	1000	1000	500	500	200	100
18		2000	2000	1000	1000		500	500	200	
20		2000	1500	1000	1000		500	500	200	100
22					500		500	500	200	
25					500		500	200	200	100
30					500		500	200	200	100
35					500		200	200	100	50
40					200		200	200	100	50
45					200		200	100	100	
50					200		200	100	100	
55							200			
60					200		200			
65					200		200			
70							200			
75							200			
80							100			

## CROSS RECESS PAN HEAD MACHINE SCREW assembled with flat & spring washer



- **Material · plating**  
 Steel / Zinc 3Cr. Plated  
 Steel / Zinc Black 3Cr. Plated



How to order or inquire: R830-B1188B-finish code diameter x length flat washer OD (prefix W)

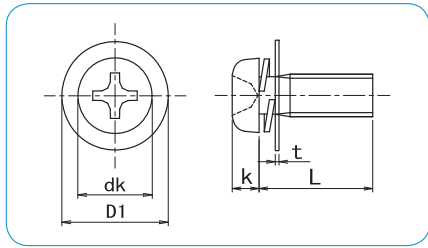
Example: R830-B1188B-CR3 3x10W8

Finish codes: CR3 for Zinc 3Cr. Plated, CR3B for Black 3Cr. Plated

	M2	M2.3	M2.6	M3	M3.5	M4	M5	M6	M8	
dk	3.5	4	4.5	5.5	6	7	9	10.5	14	
k	1.3	1.5	1.7	2	2.3	2.6	3.3	3.9	5.2	
D1	6	7	7.5	8	9	10	12	13	18	
t	0.4	0.5	0.5	0.5	0.5	0.8	0.8	1.0	1.6	
Drive Size	1			2				3		

		pcs / Box							
d L	M2	M2.3	M2.6	M3	M3.5	M4	M5	M6	M8
4	4000		2500	1800					
5	3500	2500	2000	1500		1300			
6	3500	2500	2000	1500	1800	1200			
8	3000	2000	1800	1200	1500	1000	600	400	
10	2500	1800	1500	1200	1500	900	600	400	
12	2200	1600	1400	1600	1200	900	500	350	150
14	2000	1400	1300	1500	1000	800	500	300	150
15	2000		1000	1500	1000	700	450	300	150
16	2000	1200	1000	1400	1000	700	450	300	150
18	1800		800	1200	800	600	400	300	130
20	1800	1000	800	1000	800	600	400	250	130
22				900		600	450	350	180
25			700	900	700	500	450	350	180
30			600	700	500	400	400	300	150
35			500	500		300	300	250	130
40				500		400	250	200	100
45				600		350	250	200	100
50				500		350	200	200	100
55						300	200		
60						300	200		
65						220	180		
70						250			
75						200			
80									

## CROSS RECESS PAN HEAD MACHINE SCREW assembled with flat & spring washer



● Material  
Stainless Steel A2



How to order or inquire: R830-B1188B-material code diameter x length flat washer OD (prefix W)

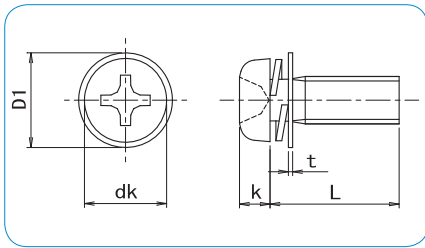
Example: R830-B1188B-A2 3x10W8

Material codes: A2 for Stainless Steel A2

	M2	M2.3	M2.6	M3	M3.5	M4	M5	M6	M8	
dk	3.5	4	4.5	5.5	6	7	9	10.5	14	
k	1.3	1.5	1.7	2	2.3	2.6	3.3	3.9	5.2	
D1	6	7	7.5	8	9	10	12	13	18	
t	0.4	0.5	0.5	0.5	0.5	0.8	0.8	1.0	1.6	
Drive Size	1			2				3		

L	d	pcs / Box								
		M2	M2.3	M2.6	M3	M3.5	M4	M5	M6	M8
4		4000		2500	2000					
5		3500	2500	2000	2000		1000			
6		3500	2500	2000	2000	1000	1000			
8		3000	2000	1500	2000	1000	1000	500		
10		2500	1500	1500	1000	1000	1000	500	200	
12		2000	1500	1000	1000	1000	500	500	200	100
14		2000	1000	1000	1000		500	500	200	
15		2000	1000	1000	1000	1000	500	500	200	100
16		2000	1000	1000	1000	1000	500	500	200	100
18		1500	1000	500	1000		500	400	200	
20		1500	1000	500	500		500	200	200	100
22					500		500	200	200	
25					500		500	200	200	100
30					500		200	200	200	100
35					500		200	200	100	50
40					200		200	100	100	50
45					200		200	100	100	
50					200		200	100	100	
55							200	100		
60					200		200			
65					200		200			
70							200			
75							200		100	
80							100			

## CROSS RECESS PAN HEAD MACHINE SCREW assembled with small flat & spring washer



- Material · plating  
 Steel / Zinc 3Cr. Plated  
 Steel / Zinc Black 3Cr. Plated



How to order or inquire: R830-B1188B-finish code diameter x length flat washer OD (prefix W)

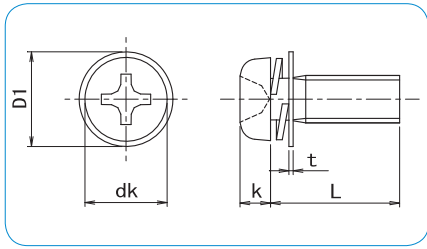
Example: R830-B1188B-CR3 3x10W6

Finish codes: CR3 for Zinc 3Cr. Plated, CR3B for Black 3Cr. Plated

	M2	M2.6	M3	M3.5	M4	M5	M6	M8
dk	3.5	4.5	5.5	6	7	9	10.5	14
k	1.3	1.7	2	2.3	2.6	3.3	3.9	5.2
D1	4.3	5	6	7	8	10	11.5	16
t	0.4	0.5	0.5	0.5	0.5	0.8	0.8	1.2
Drive Size	1		2			3		

		pcs / Box							
d	L	M2	M2.6	M3	M3.5	M4	M5	M6	M8
4	4	7000	3500	2000					
5	5	5000	3000	2000	2500	1600			
6	6	5000	3000	2000	2200	1500			
8	8	4000	2500	1800	2000	1300	800	400	
10	10	3000	2000	1500	1800	1200	700	400	
12	12	2500	1800	2000	1500	1000	600	400	160
14	14	2500	1500	1800	1200	900	500	350	160
15	15	2000	1500	1500	1200	900	500	350	150
16	16	2000	1500	1500	1200	800	500	350	150
18	18	1800	1000	1300	1000	800	450	300	130
20	20	1800	1000	1200	1000	700	400	300	130
22	22			1000		700	500	400	180
25	25			1000	700	600	500	350	180
30	30			800	600	500	500	350	160
35	35			700		400	400	300	140
40	40			500		500	350	250	120
45	45			800		400	300	200	110
50	50			700		400	200	200	100
55	55								
60	60								
65	65								
70	70								
75	75								
80	80								

## CROSS RECESS PAN HEAD MACHINE SCREW assembled with small flat & spring washer



● Material  
Stainless Steel A2



How to order or inquire: R830-B1188B-material code diameter x length flat washer OD (prefix W)

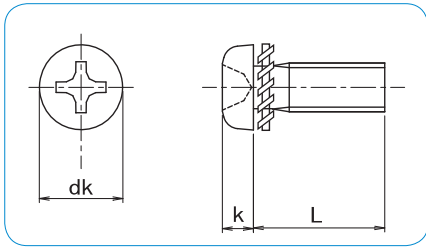
Example: R830-B1188B-A2 3x10W6

Material codes: A2 for Stainless Steel A2

	M2	M2.6	M3	M3.5	M4	M5	M6	M8
dk	3.5	4.5	5.5	6	7	9	10.5	14
k	1.3	1.7	2	2.3	2.6	3.3	3.9	5.2
D1	4.3	5	6	7	8	10	11.5	16
t	0.4	0.5	0.5	0.5	0.5	0.8	0.8	1.2
Drive Size	1		2			3		

L	d	pcs / Box							
		M2	M2.6	M3	M3.5	M4	M5	M6	M8
4		7000	3500						
5		5000	3000	2000					
6		5000	3000	2000	2000	1000			
8		4000	2500	2000	1000	1000	500		
10		3000	2000	2000	1000	1000	500	200	
12		2500	1500	1000	1000	1000	500	200	
14		2500	1500	1000		1000	500	200	
15		2000	1500	1000	1000	1000	500	200	
16		2000	1500	1000	1000	500	500	200	
18		1500	1000	1000		500	500	200	
20		1500	1000	1000	500	500	500	200	
22				500		500	200	200	
25				500		500	200	200	
30				500		500	200	200	100
35				500		200	200	100	50
40				200		200	200	100	50
45				200		200		100	
50				200		200		100	
55						200			
60				200		200			
65				200		200			
70						200			
75						200			
80						100			

## CROSS RECESS PAN HEAD MACHINE SCREW external toothed lock washer



How to order or inquire: R830-B1188C-finish code diameter x length

Example: R830-B1188C-CR3 3x10

Finish codes: CR3 for Zinc 3Cr. Plated, CR3B for Black 3Cr. Plated

	M2	M2.6	M3	M3.5	M4	M5	M6
dk	3.5	4.5	5.5	6	7	9	10.5
k	1.3	1.7	2	2.3	2.6	3.3	3.9
Drive Size	1		2			3	

### ● Material - plating

Steel / Zinc 3Cr. Plated

Steel / Zinc Black 3Cr. Plated

		pcs / Box					
L \ d	M2	M2.6	M3	M3.5	M4	M5	M6
4	8000	2500	2500				
5	7000	2500	2500		2000		
6	6000	2000	2500	2500	1800		
8		2000	2000	2000	1600	800	
10		1800	1800	1800	1200	800	500
12		1600	2000	1500	1200	800	450
14			2000		1200	700	
15			1800		1000	600	400
16			1800		1000	600	350
18			1600		900	500	
20			1500		800	500	
25					600	600	
30					500	500	
35					450		
40					500		

### ● Material

Stainless Steel A2

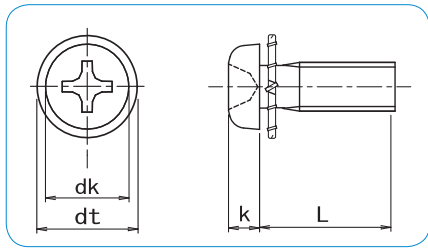
		pcs / Box
L \ d	M4	
5	1000	
6	1000	
8	1000	
10	1000	
12	1000	
14	1000	
15	1000	
16	500	
18	500	
20	500	
25	500	
30	500	
35	200	
40	200	

How to order or inquire: R830-B1188C-material code diameter x length

Example: R830-B1188C-A2 3x10

Material codes: A2 for Stainless Steel A2

## CROSS RECESS PAN HEAD MACHINE SCREW internal toothed lock washer



How to order or inquire: R830-B1188D-finish code diameter x length

Example: R830-B1188D-CR3 3x10

Finish codes: CR3 for Zinc 3Cr. Plated, CR3B for Black 3Cr. Plated

	M2.6	M3	M4	M5
dk	4.5	5.5	7	9
k	1.7	2	2.6	3.3
Drive Size	1	2		

### ● Material - plating

Steel / Zinc 3Cr. Plated

Steel / Zinc Black 3Cr. Plated

		pcs / Box			
L \ d	M2.6	M3	M4	M5	
4	2500				
5	2500	2500			
6	2000	2500	1800		
8	2000	2000	1600	800	
10	1800	1800	1200	800	
12	1600	2000	1200	800	
14		2000	1200		
15		1800	1000		
16		1800	1000		
18		1600	900		
20			800		
25			600		
30			500		