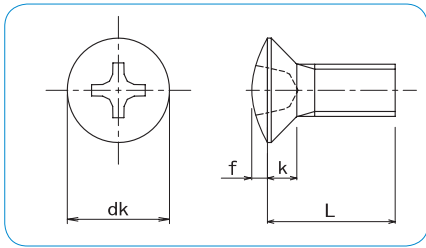


CROSS RECESS OVAL HEAD MACHINE SCREW JIS B1111 appendix



- **Material · plating**
 Steel / Zinc 3Cr. Plated
 Steel / Zinc Black 3Cr. Plated



How to order or inquire: R830-B1111OH-finish code diameter x length

Example: R830-B1111OH-CR3 3x10

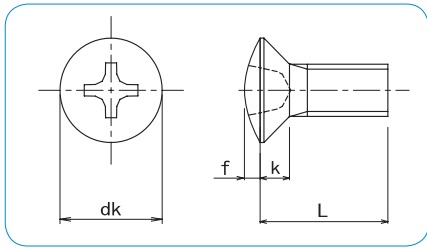
Finish codes: CR3 for Zinc 3Cr. Plated, CR3B for Black 3Cr. Plated

	M2	M2.5	M2.6	M3	M3.5	M4	M5	M6	M8
dk	4	5	5.2	6	7	8	10	12	16
k	1.2	1.45	1.5	1.75	2	2.3	2.8	3.4	4.4
f	0.4	0.55	0.6	0.7	0.8	0.9	1.2	1.4	1.8
Drive Size	1			2			3		

		pcs / Box								
d	L	M2	M2.5	M2.6	M3	M3.5	M4	M5	M6	M8
3		12,000								
4		10,000	5,000	5,000	4,000					
5		8,000	5,000	5,000	3,000	4,000				
6		8,000	4,500	4,500	2,500	4,000	2,200			
8		6,000	3,500	3,500	2,200	3,000	2,000	1,000	700	
10		5,000	3,000	3,000	2,000	2,500	1,600	900	600	
12				2,500	2,500	2,000	1,500	800	600	300
14				2,000	2,200		1,200	800	500	
15				1,800	2,000		1,200	700	500	250
16				1,800	2,000		1,000	700	450	250
18					1,600		1,000	600	400	200
20					1,500		900	500	350	200
22					1,400		800	700	500	
25					1,200		700	700	500	220
30					1,000		600	600	400	200
35					700		500	500	300	180
40					600		600	400	300	160
45					800		500	350	250	150
50					600		450	300	200	130

* ... Zinc 3Cr. Plated only

CROSS RECESS OVAL HEAD MACHINE SCREW JIS B1111 appendix



● **Material**
Stainless Steel A2



How to order or inquire: R830-B1111OH-material code diameter x length

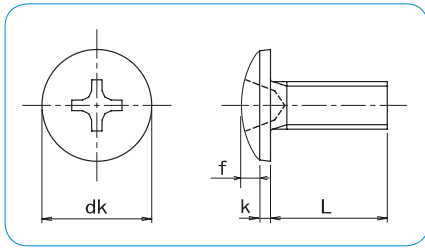
Example: R830-B1111OH-A2 4x16

Material codes: A2 for Stainless Steel A2

	M3	M4	M5	M6
dk	6	8	10	12
k	1.75	2.3	2.8	3.4
f	0.7	0.9	1.2	1.4
Drive Size	2		3	

		pcs / Box			
d	L	M3	M4	M5	M6
5		3,000			
6		3,000	2,000		
8		2,000	1,000	1,000	
10		2,000	1,000	500	500
12		2,000	1,000	500	500
14		2,000	500	500	500
15		1,000	500	500	500
16		1,000	1,000	500	200
18		1,000	500	500	200
20		1,000	500	500	200
22				500	
25		1,000	500	500	200
30		500	500	200	200
35			500	200	200
40			200	200	100
45			200	200	100
50			200	100	100

CROSS RECESS BINDING HEAD MACHINE SCREW JIS B1111 appendix



- Material · plating
 Steel / Zinc 3Cr. Plated
 Steel / Zinc Black 3Cr. Plated



How to order or inquire: R830-B1111BDH-finish code diameter x length

Example: R830-B1111BDH-CR3 3x10

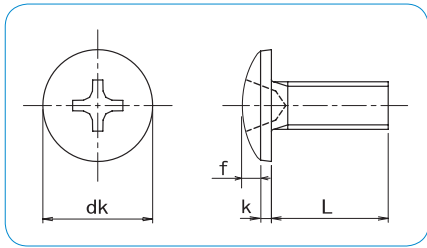
Finish codes: CR3 for Zinc 3Cr. Plated, CR3B for Black 3Cr. Plated

	M2	M2.3	M2.5	M2.6	M3	M3.5	M4	M5	M6	M8
dk	4.3	4.9	5.3	5.5	6.3	7.3	8.3	10.3	12.4	16.4
k+f	1.2	1.4	1.5	1.6	1.9	2.2	2.5	3.1	3.7	4.8
Drive Size	1				2				3	

		pcs / Box								
d L	M2	M2.3	M2.5	M2.6	M3	M3.5	M4	M5	M6	M8
2	10,000									
3	10,000	6,000	5,000	4,000	2,500		2,000			
4	8,000	6,000	5,000	4,000	2,500		1,600			
5	7,000	5,000	4,000	4,000	2,500	2,500	1,600	800		
6	6,000	5,000	3,500	3,500	2,200	2,500	1,600	800	500	
8	5,000	4,000	3,000	3,000	1,800	2,000	1,500	800	500	250
10	4,000	3,000	2,500	2,500	1,800	1,800	1,200	800	450	250
12	3,500	2,000	2,000	2,000	2,200	1,600	1,200	700	400	200
14	2,500	2,000	1,800	1,800	2,000		1,000	600	400	150
15	2,500	2,000	1,500	1,500	1,800		1,000	600	350	150
16	2,200	1,800	1,500	1,500	1,800		900	500	350	150
18	2,000		1,500	1,500	1,500		800	500	300	150
20	1,800		1,200	1,200	1,400		700	450	300	150
22					1,200		700	500		
25					1,000		600	500	400	180
30					800		500	500	300	170
35					700		400	400	300	160
40					500		500	350	250	140
45					700		450	300	200	130
50					600		400	250	180	110
55							* 350			
60							* 300			

* ... Zinc 3Cr. Plated only

CROSS RECESS BINDING HEAD MACHINE SCREW JIS B1111 appendix



- **Material**
Stainless Steel A2



How to order or inquire: R830-B1111BDH-material code diameter x length

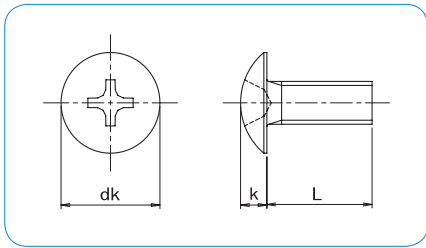
Example: R830-B1111BDH-A2 4x16

Material codes: A2 for Stainless Steel A2

	M3	M4	M5	M6
dk	6.3	8.3	10.3	12.4
k+f	1.9	2.5	3.1	3.7
Drive Size	2			3

L	pcs / Box			
	M3	M4	M5	M6
3	3,000			
4	3,000	1,000		
5	2,000	1,000		
6	2,000	1,000	500	
8	2,000	1,000	500	500
10	2,000	1,000	500	500
12	2,000	1,000	500	200
14	1,000	500	500	200
15	1,000	500	500	200
16	1,000	500	500	200
18	1,000	500	500	200
20	1,000	500	400	200
22				
25	500	500	200	200
30	500	500	200	200
35		200	200	100
40		200	200	100
45		200	100	100
50		200	100	100

CROSS RECESS TRUSS HEAD MACHINE SCREW JIS B1111 appendix



- **Material · plating**
 Steel / Zinc 3Cr. Plated
 Steel / Zinc Black 3Cr. Plated



How to order or inquire: R830-B1111TRH-finish code diameter x length

Example: R830-B1111TRH-CR3 3x10

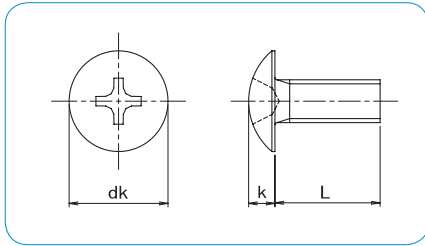
Finish codes: CR3 for Zinc 3Cr. Plated, CR3B for Black 3Cr. Plated

	M2	M2.3	M2.5	M2.6	M3	M3.5	M4	M5	M6	M8	M10
dk	4.5	5.2	5.7	5.9	6.9	8.1	9.4	11.8	14	17.8	21
k	1.2	1.4	1.5	1.6	1.9	2.2	2.5	3.1	3.7	4.8	5.1
Drive Size	1					2			3		4

d L	pcs / Box										
	M2	M2.3	M2.5	M2.6	M3	M3.5	M4	M5	M6	M8	M10
2	10,000										
3	8,000	7,000	4,000	4,000	2,500		2,000				
4	8,000	6,000	4,000	4,000	2,500		1,600				
5	7,000	5,000	4,000	4,000	2,500	2,500	1,600	800			
6	6,000	5,000	3,500	3,500	2,200	2,500	1,600	800	500		
8	5,000	4,000	3,000	3,000	1,800	2,000	1,500	800	500	250	
10	4,000	3,000	2,500	2,500	1,800	1,800	1,200	800	450	250	
12	3,500	2,000	2,000	2,000	2,200	1,600	1,200	700	400	200	
14	2,500	2,000	1,800	1,800	2,000	1,400	1,000	600	400	150	
15	2,500	2,000	1,500	1,500	1,800	1,200	1,000	600	350	150	
16	2,200	1,800	1,500	1,500	1,800	1,200	900	500	350	150	150
18	2,000		1,500	1,500	1,500		800	500	300	150	
20	1,800		1,200	1,200	1,400	1,000	700	450	300	150	150
22					1,200		700	600	400	220	
25					1,000	800	600	500	400	180	100
30					800	600	500	500	300	170	100
35					700		400	400	300	160	100
40					500		500	350	250	140	80
45					700		450	300	200	130	80
50					600		400	250	180	110	70
55							350	200	150	100	
60							300	200	150	100	
65							250	180	120	90	
70							250	180	120	80	
75							250	180	160		
80									150	70	
85											
90								250	130	70	
95											
100									130	70	

* ... Zinc 3Cr. Plated only

CROSS RECESS TRUSS HEAD MACHINE SCREW JIS B1111 appendix



RoHS Directive Compliance

How to order or inquire: R830-B1111TRH-material code diameter x length

Example: R830-B1111TRH-A2 4x16

Material codes: A2 for Stainless Steel A2

	M2.6	M3	M4	M5	M6	M8
dk	5.9	6.9	9.4	11.8	14	17.8
k	1.6	1.9	2.5	3.1	3.7	4.8
Drive Size	1		2		3	

● **Material**

Stainless Steel A2

pcs / Box

L \ d	M2.6	M3	M4	M5	M6	M8
3	6,000	3,000				
4	6,000	3,000				
5	4,000	2,000	1,000			
6	4,000	2,000	1,000	500		
8	3,000	2,000	1,000	500	500	
10	3,000	2,000	1,000	500	500	200
12	3,000	2,000	1,000	500	200	200
14	2,000	1,000	500	500	200	200
15	2,000	1,000	500	500	200	200
16		1,000	500	500	200	200
18		1,000	500	500	200	100
20		1,000	500	400	200	100
22			500		200	
25		500	500	200	200	100
30		500	500	200	200	100
35			200	200	200	50
40			200	200	100	50
45			200	100	100	50
50			200	100	100	50



How to order or inquire: R830-B1111TRH-material code diameter x length

Example: R830-B1111TRH-316L 4x16

Material codes: 316L for Stainless Steel 316L

● **Material**

SUS 316L Stainless Steel A4

L \ d	M4	M5
6	300	
8	300	200
10	300	200
12	300	200
15	300	200
16	300	200
20	300	200
25	300	200
30	300	200



pcs / Box